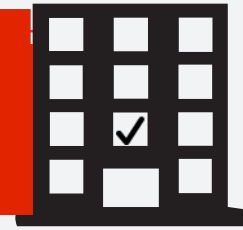


NEED TO KNOW:



WHEN TO CHECK

MONTHLY

Check your fire extinguishers

- None are **missing** or **damaged**
- Extinguishers are **visible** and **accessible**
- Pressure gauge pointer is **in the green zone**
- Tamper seal **not missing** or **broken**

Check your Emergency Exit Lights

Push and hold the "push to test" button for 30 seconds to make sure they stay lit

ANNUALLY

A trained extinguisher technician performs service on all fire extinguishers to ensure they are **in proper working order in accordance with the manufacturer's manual**.

A trained technician also will perform a 90 minute emergency lighting test to ensure that lights stay lit if power fails.

PERIODICALLY

Internal Examination & Hydrostatic Testing (pressure testing of the containers) should be done

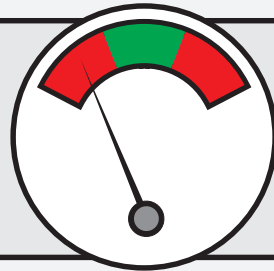
A trained extinguisher technician **internally examines** components of pressurized extinguishers (every 3, 5, or 6 years, depending on type) and **replaces worn parts in accordance with the manufacturer's manual**.

HYDROSTATIC TESTING

A trained extinguisher technician removes extinguishers to **perform nondestructive pressure tests** (every 5, or 12 years, depending on type). Loaner extinguishers replace removed extinguishers until work is complete and original extinguishers are returned.

WHEN TO RECHARGE

- After **any use**
- Pressure gauge pointer is **out of green zone**
- Tamper seal **missing** or **broken**



WHEN TO REPLACE

A trained service technician can determine if an extinguisher is obsolete, damaged and unusable, or can't be serviced in accordance with the manufacturer's manual.



AND REMEMBER...

BE PREPARED

Have an emergency plan, conduct periodic fire drills, make sure your fire extinguishers are inspected and serviced.

BE SAFE

In the event of a fire, call 911 and begin to evacuate the building.

BE KNOWLEDGEABLE

When a fire is discovered during its early stage, grab the nearest extinguisher and remember the word PASS: **P**ull the pin. **A**im at the base of the fire. **S**queeze the operating lever. **S**weep the discharge from side to side.

BE CONFIDENT

You can rest assured that your fire extinguishers are usable during a fire emergency when installed and serviced by a trained technician.



Certified Fire Protection
A Division of Simplex Security

Inspections. Services. Training.

Fort Wayne, Indiana
260.482.7233

**FIRE EQUIPMENT
MANUFACTURERS'
ASSOCIATION**

